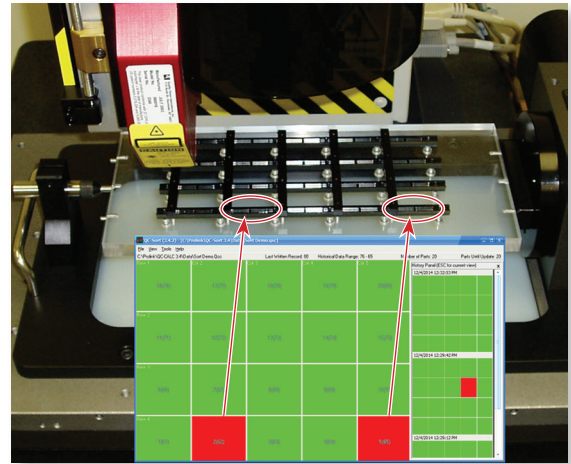


Introduction

This non-statistical application is used in conjunction with QC-CALC Real-Time to quickly identify bad parts on a multiple part fixture. QC-Sort makes it easy for operators to remove problem parts from the fixture by using color coded squares to identify the bad parts. QC-Sort is adjustable and easily configured to display the physical layout of your parts as they are fixtured.

Key Benefits

- Out of Spec parts clearly displayed
- Past fixture results available
- Automatically printed fixture results
- Ability to view partial fixture results

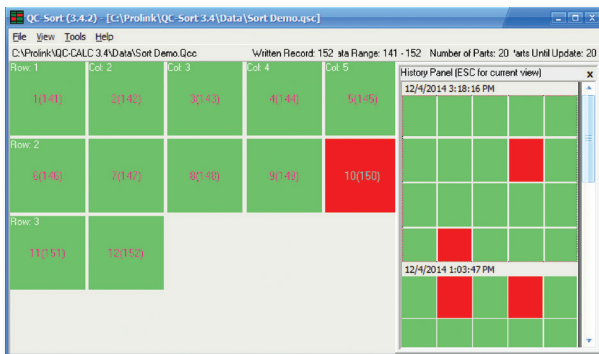


Sort Plans Keep you Organized

Simply point the Sort Plan to a QCC file, tell it how many parts to look at, and specify the general layout of the fixture.

Color Coding for Easy Identification

QC-Sort reads the data QC-CALC Real-Time collected and looks at it by the set number of parts that was configured. The parts are then laid out to match your fixturing. If any feature on a part is out of specification, that part is considered a bad part and is displayed in red. All good parts are displayed in green.



Partial Batch

Partial batches can be handled with a quick adjustment. QC-Sort will automatically display the partial batch and return to normal for the next batch.

History Panel

The History Panel displays up to 5 past batches on the right side of the screen. Click on the past batch of interest to see it as the main display.

Pictures for Display

Pictures can be used in place of colored rectangles to help operators remove the correct parts from the fixture.



Printed Results

The Auto Print option prints the screen for each batch so the fixture results can stay with the physical fixture.

